



WOODBINE

GROUP AND CORPORATE

★ HOSPITALITY ★

MAKE YOUR NEXT
★ EVENT ★
AN UNBRIDLED
Experience

WWW.HOSTYOUREVENT.COM
WOODBINE RACETRACK, TORONTO ON



WELCOME TO WOODBINE RACETRACK

TORONTO, ON



Welcome to Woodbine Racetrack, located just north of Toronto, minutes from Pearson Airport. With roots dating back to 1881, Woodbine is the largest horse racing operator in Canada, and home to the iconic King's Plate.

We are committed to hospitality excellence - creating unique and engaging events for both seasoned race fans, and introducing new guests to the sport. Groups of any size can find thrill and excitement in our numerous event spaces, boasting premium views of the track, along with meeting and event spaces to suit your needs.

With racing offered 4 times per week April through December, combined with exquisite culinary offerings, Woodbine is a unique space to host your next event or group function. From corporate meetings, to holiday parties, birthdays, and everything in-between, we have something for everyone in a setting that won't soon be forgotten.

We look forward to welcoming you to make your next event an unbridled experience.

WHICH VENUE IS RIGHT FOR YOU?

<i>Features</i>	TURF LOUNGE	POST PARADE	STELLA TERRACE	CLUB SUITE	TRACKSIDE CLUBHOUSE	HOMESTRETCH SUITES
EXCLUSIVE EVENT SPACE	●			●	●	●
GROUP SPACE IN RESTAURANT		●	●			●
SMALL GROUPS (20-30)		●	●	●		●
MEDIUM GROUPS (25-100)	●	●	●		●	●
LARGE GROUPS (100-300)	●	●			●	
EXTRA LARGE GROUP (UP TO 900)					●	
RESTAURANT MENUS		●	●	●		●
BANQUET MENUS	●	●			●	●
TRACKSIDE VIEWS	●	●	●	●	●	●
LIVE WAGERING & TELLERS	●	●	●	●	●	●
LIVE RACING BROADCAST	●	●	●	●	●	●
TIERED DINING TABLES	●	●	●	●		
FLEXIBLE EVENT SPACE	●	●			●	
OUTSIDE VIEWING AREA	●	●	●	●	●	●

WELCOME TO THE TURF LOUNGE



CAPACITY

200 seated, 300 reception

SERVICE TYPE

Sit-down, Reception, Food stations

FOOD TYPE

Food stations
Passed hors d'œuvres
Prix-fixe reception menus
Host, Ticketed or Cash bar

MINIMUM SPEND

\$10,000 food & beverage

ROOM SETUP

Dining tables – lower tiers
Flexible space – top tiers

AMENITIES

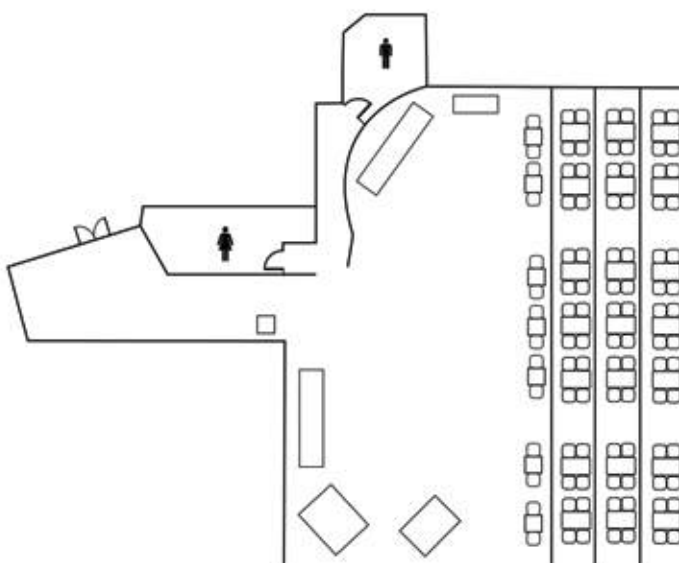
- Private washrooms (man, women, gender neutral)
- Escalator with direct access to the apron for at-the-rail racing
- Walk-out to private standing room balcony in Grandstand
- Wagering machines
- Live tellers
- 3rd party entertainment permitted
- Live racing broadcast

Located on the 2nd floor of Woodbine Racetrack, the new Turf Lounge event space provides an exclusive venue for your group, overlooking the finish line.

Floor-to-ceiling windows provide a panoramic view of the track from every angle. Enjoy four levels of tiered seating, plus a private outdoor balcony with standing room. Your group can get up close and personal with the racing action, with ample space for banquet set up, customized to your liking. This space also includes dedicated wagering terminals, making wagering fun and accessible.

Our newly built custom bar provides dedicated beverage service to complement your meal, with an extensive offering of beer, wine, and hand-crafted cocktails.

★ FLOOR PLAN











WELCOME TO POST PARADE



BUY OUT: 200

CAPACITY

200 seated, 300 reception style. Note: Smaller groups can be accommodated in shared dining space

SERVICE TYPE

Sit-down reception, Cocktail reception, Food stations

FOOD TYPE

Food stations, Pass hors d'œuvres, Prix-fixe reception menus, Host, Ticketed or Cash bar

MINIMUM SPEND

\$15,000 for full buy-out of dining space

ROOM SETUP

Dining tables, Banquet

AMENITIES

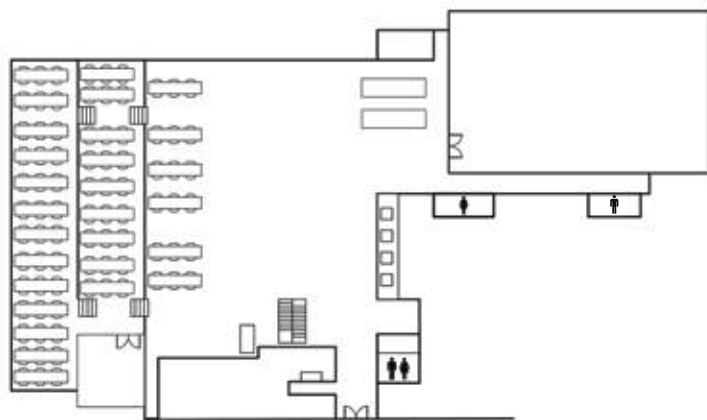
- Adjacent meeting / conference space available
- Washrooms
- Televisions with live racing feed at all dining tables
- Wagering machines
- Live tellers
- 3rd party entertainment permitted
- Live racing broadcast

Located on the 4th floor of Woodbine Racetrack, this space provides semi-exclusive or exclusive space for your group, overlooking the finish line. Floor-to-ceiling windows provide a panoramic view of the track from every angle.

TV monitors throughout ensure great views for every guest. Three levels of tiered seating provide ample versatile space for both fixed and banquet style seating, customized to your liking. Also equipped with private washrooms and access to your very own section of the grandstand with a breathtaking view of the racetrack.

This space also includes 6 dedicated wagering terminals, making wagering fun and accessible.

★ **FLOOR PLAN**







WELCOME TO THE HOMESTRETCH SUITES



BUY OUT: 100

CAPACITY

13 suites, seating max
8 persons per suite

SERVICE TYPE

Dedicate suite-style food &
beverage service, party
platters

FOOD TYPE

Party platters, host ticketed or
cash bar

MINIMUM SPEND

\$300 per suite

AMENITIES

- Private suites
- Dedicated in-suite host
- Shaded patio seating

Homestretch Bar & Suites are located on the east side at track level and will give you unparalleled access to all the racing excitement Woodbine has to offer. It includes a new bar and food service counter, along with wagering terminals located in the heart of the action.

Homestretch Suites features 13 new trackside suites, each with covered lounge seating for up to 8 guests.

Sit back, relax, and enjoy food and beverage service with a dedicated in-suite host. Enhance your suite with a variety of grazing board packages, including charcuterie, antipasto and fruit platters complete with wine pairing.

Perfect for group events including birthdays, office parties, and more, it is sure to become the premium space to take in the action!

OPEN MAY LONG WEEKEND THROUGH THANKSGIVING.





WELCOME TO THE STELLA ARTOIS TERRACE



CAPACITY

30 people

SERVICE TYPE

Stella Artois Terrace dining experience, Cocktail reception

FOOD TYPE

Prix fixe, condensed menus

MINIMUM SPEND

\$60 minimum per person spend (food and beverage)

ROOM SETUP

Dining Tables

High top tables

Lounge seating

Note: Fixed positioning

AMENITIES

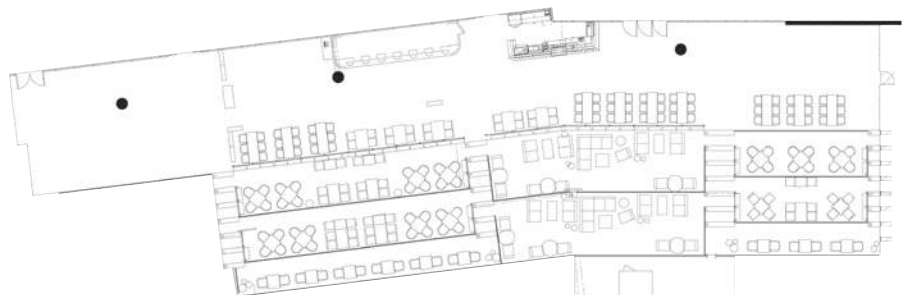
- Washrooms
- Mounted televisions
- Lounge seating, high tables, dining tables
- Covered, open-air patio
- Wagering machines
- Live tellers
- Live racing broadcast

Located on the 3rd floor of Woodbine Racetrack, the Stella Artois Terrace is one of the most unique patio experiences in the city. Enjoy the races in this open-air space with a casual dining experience with chef-inspired menus, hand-crafted cocktails, and music to enhance your dining experience. This outdoor, covered space has 3 tiers of mix seating that can be leveraged for dining and lounge options.

Note: The Stella Artois Terrace is available Thursdays and Fridays only for a maximum of 30 persons.

OPEN MAY LONG WEEKEND THROUGH THANKSGIVING.

★ FLOOR PLAN









WELCOME TO THE TRACKSIDE CLUBHOUSE

CAPACITY

900 people

SERVICE TYPE

Sit-down reception
Cocktail reception
Chef stations

FOOD TYPE

Food stations,
Passed hors d'œuvres,
Prix-fixe reception menus,
Host, Ticketed or Cash bar

MINIMUM SPEND

\$10,500 food & beverage
Rental fee: \$5500

ROOM SETUP

Dining tables, banquet

AMENITIES

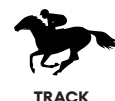
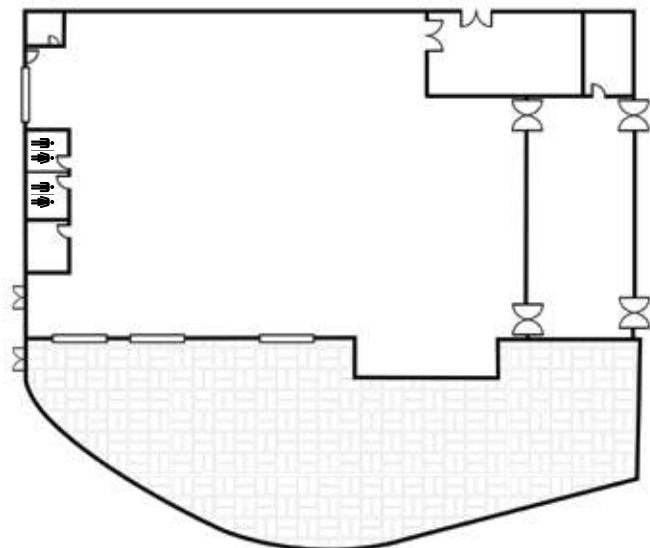
- Washrooms
- Private patio
- Wagering machines
- Live tellers
- 3rd party entertainment permitted
- Live racing broadcast

You can't get any closer to the action than this. The Trackside Clubhouse event venue and dining space lies right beside the track at the first turn. Enjoy expansive indoor and outdoor space as you watch the horses file into the starting gate with impressive views of the track. *This venue is fully serviced by Peter & Paul's Event Catering.*

The spacious venue can comfortably seat up to 900 people. The indoor area is 10,000 square feet and the outdoor patio is 6,500. TVs are dispersed throughout, and wagers can be made through tellers or terminals as you enjoy our personalized hospitality.

Ideal for corporate events, office parties, conferences and trade shows.

★ FLOOR PLAN







WELCOME TO THE WOODBINE CLUB SUITE



CAPACITY

25 people

SERVICE TYPE

Sit-down reception, Cocktail reception

FOOD TYPE

A la carte menu, leveraging the Woodbine Club menu, Hors d'oeuvres (groups of 15+), Host, Ticketed or Cash bar

MINIMUM SPEND

\$1,200 food & beverage

ROOM SETUP

Tiered dining, Private bar

AMENITIES

- Private washroom
- Enclosed private suite
- 6 televisions
- Private access to grandstand
- In-suite bartender available for additional cost

Note: The Woodbine Club Suite is available exclusively to members of the Woodbine Club. A Woodbine Club Experience day pass is required (\$100 investment). Please speak with with a member of our team for more information.

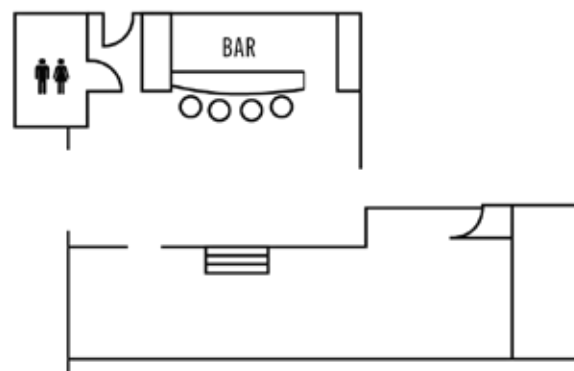
Newly renovated for 2024!

Located on the 4th floor of Woodbine Racetrack, overlooking the finish line, the Woodbine Club Suite provides a private, sophisticated space for up to 25 people. The suite is adjacent to the historic Woodbine Club restaurant.

The Woodbine Club Suite is an exclusive space where you and your guests can watch, wager and dine. Ideal for private birthday parties and anniversaries, small events and corporate gatherings.

Floor-to-ceiling windows provide a panoramic view of the track from every angle. TV monitors throughout to ensure great views for every guest. Two levels of tiered dining seating and private balcony overlook the grandstand, providing indoor and outdoor access.

★ FLOOR PLAN



TRACK



EVENT
ENHANCEMENTS

TAKE YOUR
Experience
TO THE
NEXT LEVEL

TAKE YOUR TEAM UP-CLOSE-AND-
PERSONAL WITH WOODBINE

PADDOCK TOURS

Get up close and personal with our equine athletes! Enjoy a complimentary guided tour through the Thoroughbred Paddock. Guests can see the horses in advance preparing to run an upcoming race. A Guest Experience team member will go over the process and practices that are taking place in addition to having the opportunity to meet a horse.

BETTING VOUCHERS

Bring the excitement of a race day to your event. Pre-order betting vouchers for your guests, great for employee appreciation or event enhancement. The perfect way to add some friendly competition, and engage your guests in their day at the races!

HOW IT WORKS

Learn to Bet with Woodbine - New to horse racing? Your guests will enjoy a complimentary betting tutorial, provided by our Wagering Ambassadors.

Custom Bet Amounts - The minimum betting vouchers denomination is \$2 per person. The total amount will be added to your account and must be paid in full prior to your event date. Betting vouchers are non-taxable.

Simple Distribution - The event manager will provide you with betting vouchers when you arrive to distribute to your guests.

Flexible Usage - Vouchers can be used with live mutuel attendants, Wagering Ambassadors or automated betting machines. Vouchers have a cash value and can be cashed at any time.



RACE PRESENTATION

Give your group exclusive access to the Winner's Circle with a custom race presentation with the winning horse. Ideal for employee rewards, entertaining clients, or a fundraising opportunity for your charity.

A dedicated race will be appointed in your company or group's name and will be featured in the race program and on the in-field screen. Up to 6 guests will be escorted to the Winner's Circle and present a small item to the winner. Your guests will be able to watch the race live from the apron at the Winner's Circle. Your group will receive a digital photo with the winning horse and jockey as a takeaway.

Investment: \$1,500 (Everyday Racing) and from \$2,500 (Marquee event)
Your support of a race presentation will contribute to helping former racehorses get a fresh start at facilities that help them start the next chapter in their life.



OUR MENUS

We are pleased to provide your group with a number of chef-inspired menus designed by our Executive Chef, paired with hand crafted cocktails, beer, and local and international wine selections.

- **BREAKFAST**
Plated, Buffet and Working
- **LUNCH BUFFETS**
- **BOXED LUNCHES**
- **PLATED RECEPTIONS**
- **HORS D'ŒUVRES & PLATTERS**
- **CHEF STATIONS**
- **BAR SERVICE**
- **SEASONALLY-INSPIRED HOLIDAY MENUS**



READY TO BOOK?

— VISIT —

HOSTYOUREVENT.COM

TO GET STARTED



GROUP & CORPORATE HOSPITALITY

WOODBINE RACETRACK

555 Rexdale Boulevard
Toronto, Ontario, M9W 5L2

Telephone: (416) 675-7223 (RACE)

Toll-Free: 1-888-675-7223

woodbine.com

