

Highway 27-Woodbine Station

Public Meeting

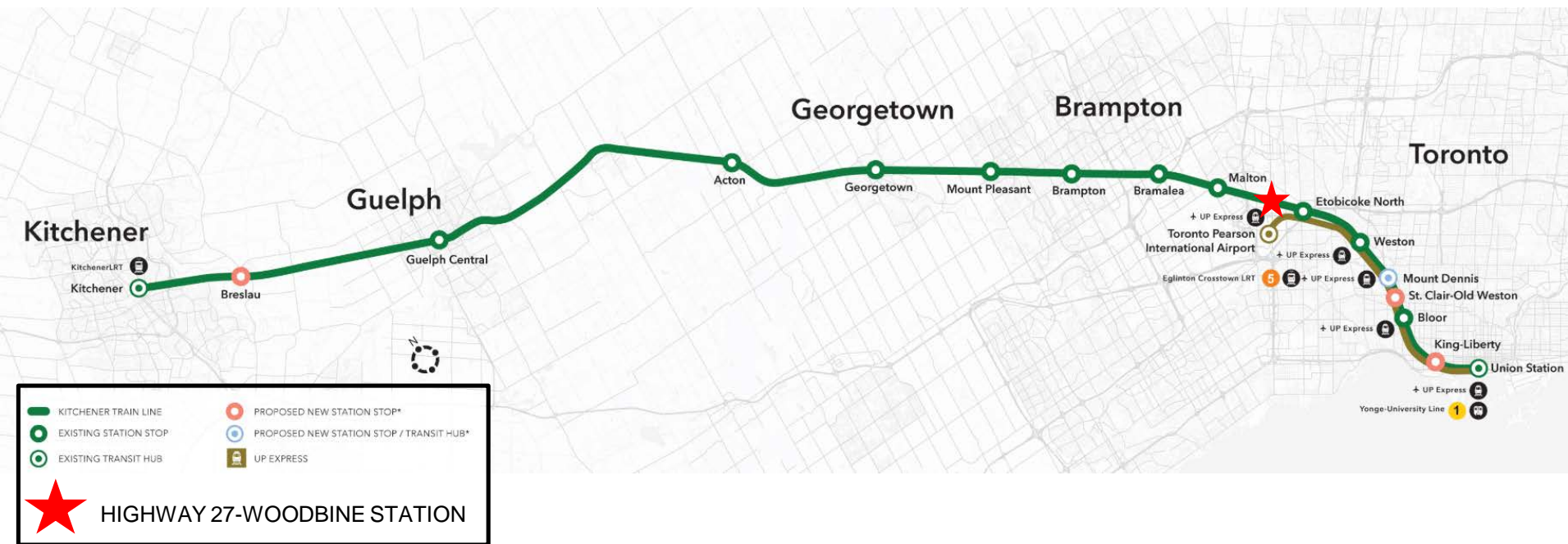
Thursday, October 10, 2019

7:00 PM to 9:00 PM

Highway 27-Woodbine Station – Overview

- Woodbine Entertainment Group (WEG) has proposed a new GO station to be developed in partnership with Metrolinx
- GO Transit currently operates train service along the Kitchener Rail Corridor, from Union Station in Toronto to Kitchener GO Station in Kitchener.
- An Environmental Assessment (EA) will be completed following the Transit Project Assessment Process (TPAP), as prescribed in O. Reg. 231/08 under the *Environmental Assessment Act*.
- The station is anticipated to evolve into a multi-modal transportation hub that will increase annual visits to the Woodbine Districts from approximately 6 million today to potentially over 16 million.

Highway 27-Woodbine Station - Along the Kitchener Corridor

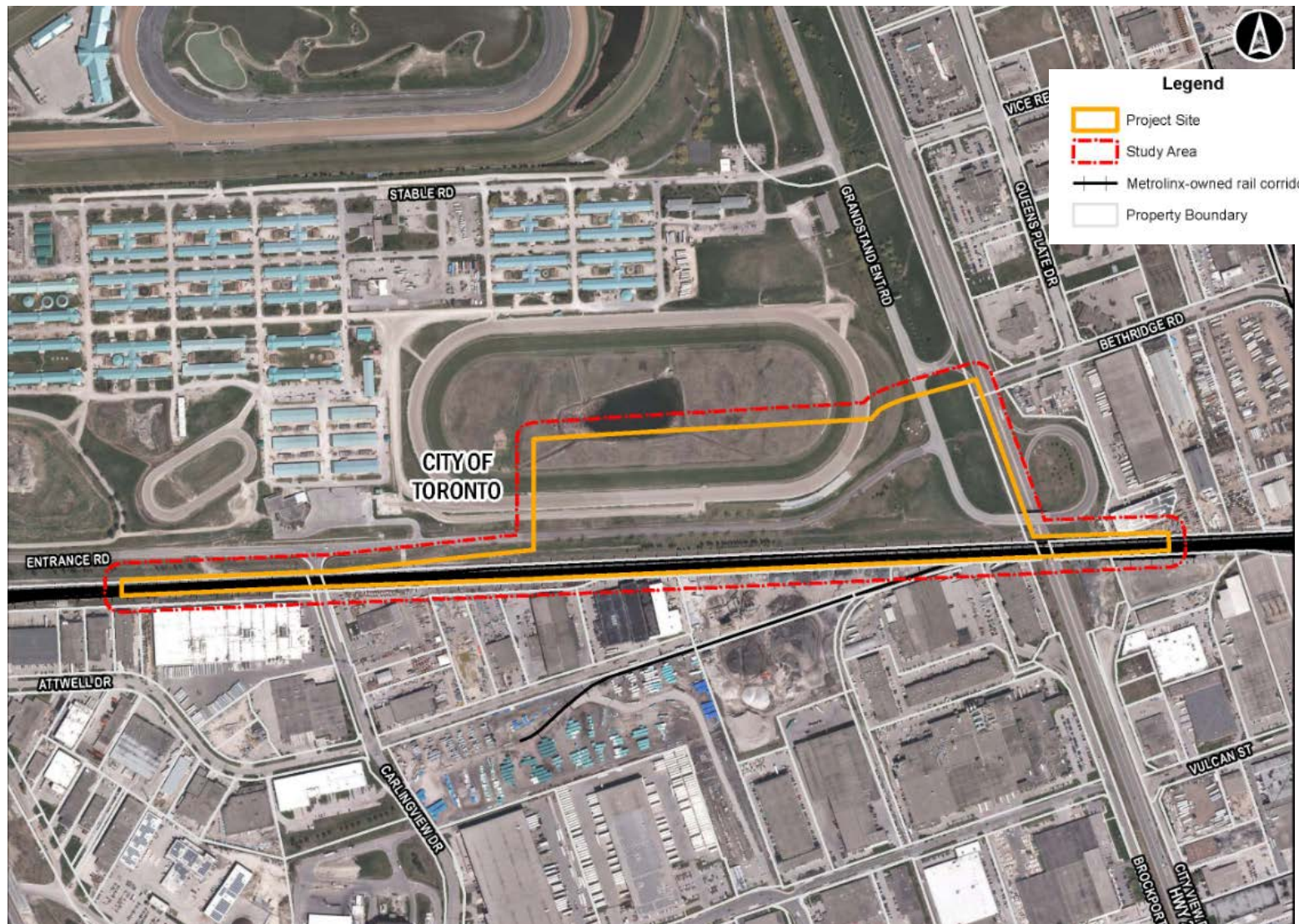


Highway 27-Woodbine Station – What's Involved

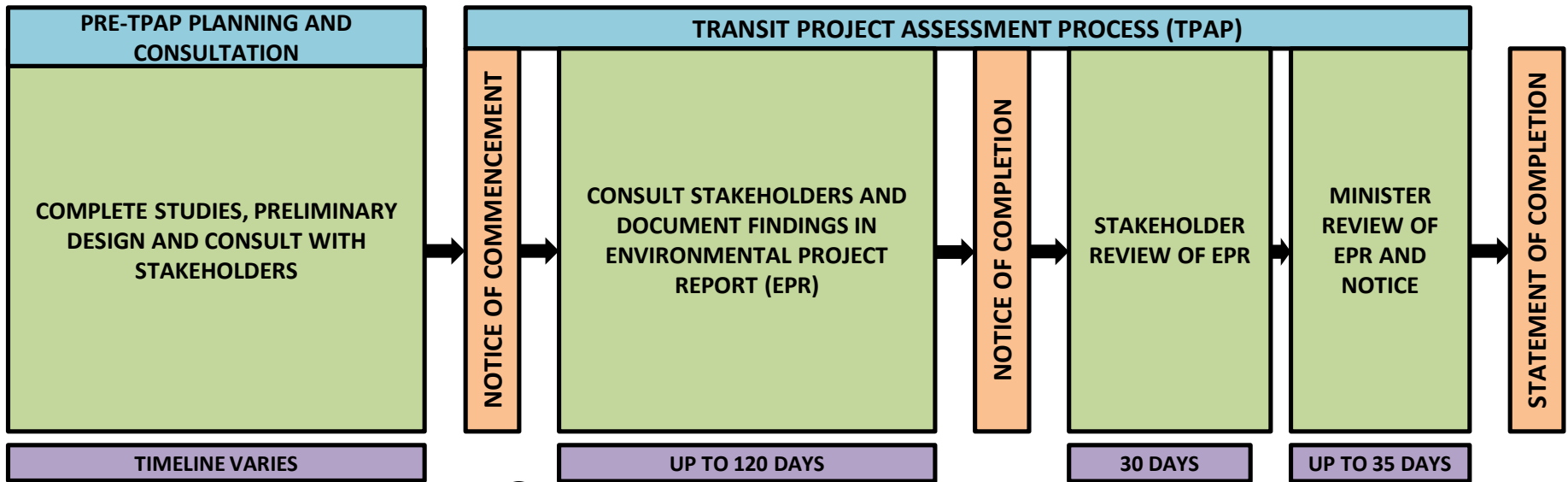
The proposed station will include:

- Two island platforms (north and south);
- Passenger pick up and drop off;
- Bus loop;
- Passenger plaza;
- Vehicle parking;
- Bicycle storage facility;
- Station building;
- Roadway with direct access to the station building, parking facility and public roadway;
- Electrification enabling infrastructure at the station (e.g. integration of Overhead Catenary System support structures into platform areas and grounding and bonding); and
- New tracks and/or realignment of the existing tracks.

Highway 27-Woodbine Station – Study Area



Transit Project Assessment Process



WE ARE HERE

What We Are Assessing

Natural Environment

- Terrestrial habitat and species
- Aquatic habitat and species
- Species of conservation concern
- Sensitive areas and features

Socio-Economic Environment

- Land use
- Socio-economic features
- Air quality
- Noise and vibration
- Traffic and transportation
- Utilities

Cultural Environment

- Archaeological resources
- Built heritage resources
- Cultural heritage landscapes

Existing Conditions – Natural Environment

Sources of data:

- Surveys and information collected from Conservation Authorities and Ministry of Environment, Conservation and Parks.
- Field surveys of terrestrial and aquatic habitat/wildlife.



Barn Swallow

We have identified:

- Plant species commonly found in urban settings.
- No fish or fish habitat present in the Study Area.
- Records of Species at Risk, Study Area was considered to contain potentially suitable habitat for the following: Monarch (SOCC) and Barn Swallow (SAR).
- No Provincially Significant Wetlands, Areas of Natural and Scientific Interest or Environmentally Significant Areas.



Monarch

Existing Conditions – Socio-Economic / Land Use

Sources of data:

- City of Toronto Official Plan land use designations.
- Applications for future development.
- Confirmation of existing land uses through field reconnaissance in June 2019.



Project Site in Winter 2019

We have identified:

- Socio-economic features and land uses within 300 m of the Project Site.
- Land use is generally consistent with the designation of surrounding lands: heavy industrial and employment areas.
- Woodbine Districts is a prominent private entertainment and recreational use with a horse racetrack, casino, and restaurants with plans for future development.
- 3 institutional uses located east of Highway 27 (places of worship).
- No residences are located within the Study Area.

Existing Conditions – Noise and Vibration

Sources of data:

- Ambient noise data was collected through temporary installment of on-site noise monitoring equipment.



Noise Level Monitor

We have identified:

- 1 Noise Sensitive Area (NSA) was identified on the northeast corner of Highway 27 and Vice Regent Boulevard (Woodbine Hotel & Suites).
- The point of noise reception is a window façade of a 2-storey hotel.



Woodbine Hotel & Suites

Existing Conditions – Cultural Environment / Built Heritage

Sources of data:

- Research was carried out using primary and secondary sources to establish a historical context.
- Assessments of buildings undertaken by heritage experts.



555 Rexdale Boulevard

We have identified:

- The two properties below were identified as potential cultural heritage resources.
- No Conditional Heritage Properties, Potential Provincial Heritage Properties or Protected Properties within or adjacent to the Study Area.
- No further evaluation is required.



Highway 27 Bridge

Existing Conditions – Cultural Environment / Archaeology

Sources of data:

- Stage 1 Archaeological Assessment (AA) including review of historical data and a property inspection.
- A Stage 2 AA completed on a small parcel of manicured lawn which included a more detailed investigation (test pitting and ploughing).

We have identified:

- Majority of Study Area is extensively disturbed.
- The study area is cleared of archaeological potential and no further work is required.



Existing Conditions – Traffic & Transportation

Sources of data:

- Traffic data collected at nearby intersections, including turning movement count data and review of signal timing plans at signalized study intersections.

We have identified:

- All intersections near the study area are operating at acceptable levels, except 2 signalized intersections operating at near-capacity and 2 unsignalized intersections operating poorly.
- The Study Area is serviced by surface bus routes operated by Toronto Transit Commission (TTC), Mississauga Transit (MiWay), and York Region Transit (YRT/Viva).
- There are existing pedestrian connections via sidewalks along Carlingview Drive from the southwest and from the northern side through sidewalks along Rexdale Boulevard and Queens Plate Drive West.
- The closest cycling facility to the Study Area is the West Humber Trail (3 km north)

Public Engagement

- **Stay in Touch**

Your feedback is important to informing this project. Share your comments by completing a feedback form and sign up for e-mail updates to stay informed:

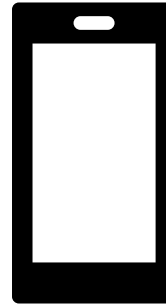
- transitea@woodbine.com

- **Recap of Public Meeting**

- A summary will be posted at www.woodbine.com/transit.ea following the meeting.
- If you submit your **feedback by October 24, 2019**, it will be included in the published meeting recap.

Next Steps – Online Survey

- **TPAP Notice of Commencement & Online Survey – November 21, 2019**
- Along with the TPAP Notice of Commencement, there will a second public engagement opportunity administered through an **Online Survey**.
- The online survey will focus on gathering feedback regarding the potential impacts, proposed mitigation measures, and monitoring requirements associated with the Project as a result of the impact assessments.



Next Steps

