



THE WOODBINE

EST. CLUB 1956

2025 ANNUAL MEMBERSHIP INFORMATION



*Welcome*



**TO**

**WOODBINE**



# MEMBERSHIP BENEFITS

## PREMIUM MEMBERSHIP

ANNUAL MEMBERSHIP FEE \$2000

INCLUSIVE OF \$1500 DINING VALUE\*

ADD A SECONDARY MEMBER OR PARTNER +\$250

*Members*  
ONLY

- WELCOME BACK TO WOODBINE CLUB MEMBERS' OPEN HOUSE
- WINE TASTINGS
- SCOTCH TASTINGS
- END OF SEASON MEMBERS' APPRECIATION PARTY



## MEMBER BENEFITS

- Woodbine Club Members' access card
- Exclusive access to preferred seating in the Woodbine Club Room Levels 1 & 2
- Preferred seating for dining room reservations<sup>1</sup>
- Exclusive Access to Munnings Room and the Woodbine Club Bar with complimentary bar mix
- Exclusive access to host private group events for up to 25 guests at The Woodbine Club Private Suite<sup>2</sup>
- Access to Johnnie Walker Owners & Trainers Lounge
- Secured priority self-parking lot
- 10% discount on food and non-alcoholic beverages at all Woodbine dining rooms and concession outlets<sup>3</sup>
- Complimentary programs<sup>4</sup>
- Complimentary carrel access<sup>5</sup>
- 50% off Woodbine Racetrack marquee event tickets, including King's Plate Grandstand tickets, Kentucky Derby Party, Turf Champions Day
- Preferred booking at the Homestretch Bar & Suites with waived booking fee

\* Dining credit expires end of season. Any unused balance will be forfeited and cannot be rolled over or redeemed for cash value.

1 - Subject to availability and capacity limits. Blackout dates apply.

2 - Food and beverage minimum spend applies.

3 - Woodbine Club member discount cannot be combined with any other discount or promotion.

4 - Includes both Woodbine & Mohawk, and choice of 2 simulcast programs per day.

5 - Excludes major stakes race dates.

# MEMBERSHIP BENEFITS

## ELITE MEMBERSHIP

**\$750 INDIVIDUAL MEMBERSHIP**

ADD A **SECONDARY MEMBER** OR **PARTNER** +\$100

**NOTE: EXCLUDES DINING CREDIT**

*Members*  
ONLY

- WELCOME BACK TO WOODBINE CLUB MEMBERS' OPEN HOUSE
- WINE TASTINGS
- SCOTCH TASTINGS
- END OF SEASON MEMBERS' APPRECIATION PARTY

## MEMBER BENEFITS

- Woodbine Club Members' access card
- Exclusive access to preferred seating in the Woodbine Club Dining Room Levels 1 & 2
- Preferred seating for dining room reservations<sup>1</sup>
- Exclusive Access to Munnings Room and the Woodbine Club Bar with complimentary bar mix
- Exclusive access to host private group events for up to 25 guests at The Woodbine Club Private Suite<sup>2</sup>
- Access to Johnnie Walker Owners & Trainers Lounge
- Secured priority self-parking lot
- 10% discount on food and non-alcoholic beverages at all Woodbine dining rooms and concession outlets<sup>3</sup>
- Complimentary programs<sup>4</sup>
- Complimentary carrel access<sup>5</sup>
- 50% off Woodbine Racetrack marquee event tickets, including King's Plate Grandstand tickets, Kentucky Derby Party, Turf Champions Day
- Preferred booking at the Homestretch Bar & Suites with waived booking fee

1 - Subject to availability and capacity limits. Blackout dates apply.

2 - Food and beverage minimum spend applies.

3 - Woodbine Club member discount cannot be combined with any other discount or promotion.

4 - Includes both Woodbine & Mohawk, and choice of 2 simulcast programs per day.

5 - Excludes major stakes race dates.



# MEMBERSHIP BENEFITS

## EXPERIENCE PASS

\$100 PER DAY

Book your experience pass for a taste of all that the Woodbine Club has to offer.

Visit [woodbine.com](http://woodbine.com) for more information.

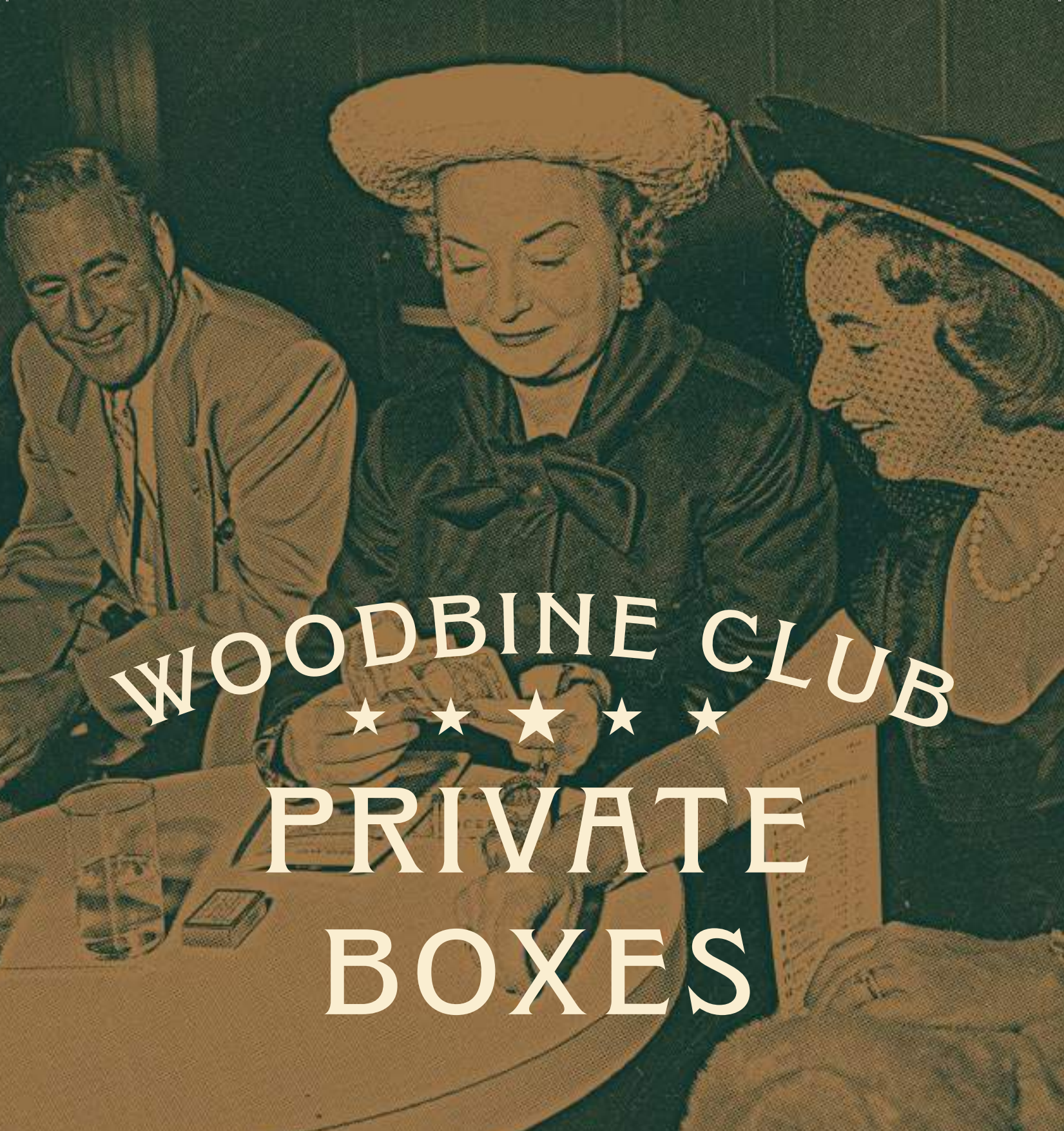
## EXPERIENCE BENEFITS

- Exclusive access to preferred seating in the Woodbine Club Dining Room Levels 1 & 2
- Access to book Woodbine Club Private Suite (seats up to 25 guests) \*with minimum spend
- 10% discount on food and non-alcoholic beverages at all Woodbine dining rooms and concession outlets<sup>1</sup>
- Exclusive Access to Munnings Room and the Woodbine Club Bar with complimentary bar mix
- Complimentary programs<sup>2</sup>

1 - Woodbine Club member discount cannot be combined with any other discount or promotion.

2 - Includes both Woodbine & Mohawk, and choice of 2 simulcast programs per day.





WOODBINE CLUB  
★ ★ ★ ★ ★  
PRIVATE  
BOXES

# PRIVATE BOXES

---

---

## 2024-2025 ANNUAL MEMBERSHIP

Elevate your racing experience with an annual private box membership, with locations on grandstand Levels 2 and 4.

### TRACK LEVEL 2

ANNUAL RENTAL FEE \$3000

KING'S PLATE SURCHARGE \$1000

INCLUDES 6 TICKETS

### TRACK LEVEL 4

ANNUAL RENTAL FEE \$1000

KING'S PLATE SURCHARGE \$100

PER SEAT

### BENEFITS

- Woodbine Club Membership included
- Dedicated host
- In-seat service
- Personalized plaque
- Personal keyed locker
- Complimentary program
- Complimentary sweet & salty snacks
- Complimentary water bottles

### BENEFITS

- Personalized plaque
- Complimentary programs

# WOODBINE CLUB SUITE

## CAPACITY

25 persons

## SERVICE TYPE

Sit-down reception, Cocktail reception

## FOOD TYPE

A la carte menu, leveraging the Woodbine Club menu, Hors d'oeuvres (groups of 15+), Host, Ticketed or Cash Bar

## MINIMUM SPEND

\$1,200 food & beverage

## ROOM SETUP

Tiered dining, Private bar

## AMENITIES

- Private washroom
- Enclosed private suite
- 6 televisions
- Private access to grandstand
- In-suite bartender available for additional cost

Note: Exclusive reservations for Woodbine Club Suite are available for hosting private events and racing experiences. Room rental fees are waived for all Woodbine Club members.

A Woodbine Club Experience day pass is required for non-members and a minimum food and beverage spend of \$1200. Please speak with with a member of our team for more information about enrollment.

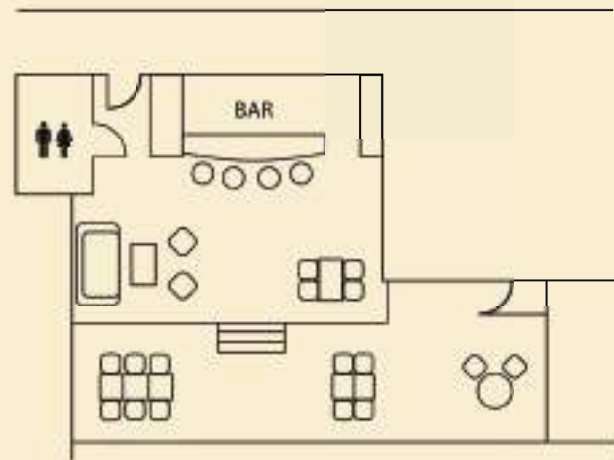
Newly renovated for 2024!

Located on the 4th floor of Woodbine Racetrack, overlooking the finish line, the Woodbine Club Suite provides a private, sophisticated space for up to 25 people. The suite is adjacent to the historic Woodbine Club restaurant.

The Woodbine Club Suite is an exclusive space where you and your guests can watch, wager and dine. Ideal for private birthday parties and anniversaries, small events and corporate gatherings.

Floor-to-ceiling windows provide a panoramic view of the track from every angle. TV monitors throughout ensure great views for every guest. Two levels of tiered dining seating and private balcony overlook the grandstand, providing indoor and outdoor access.

## ★ FLOOR PLAN



TRACK



# WOODBINE CLUB SUITE

---

---

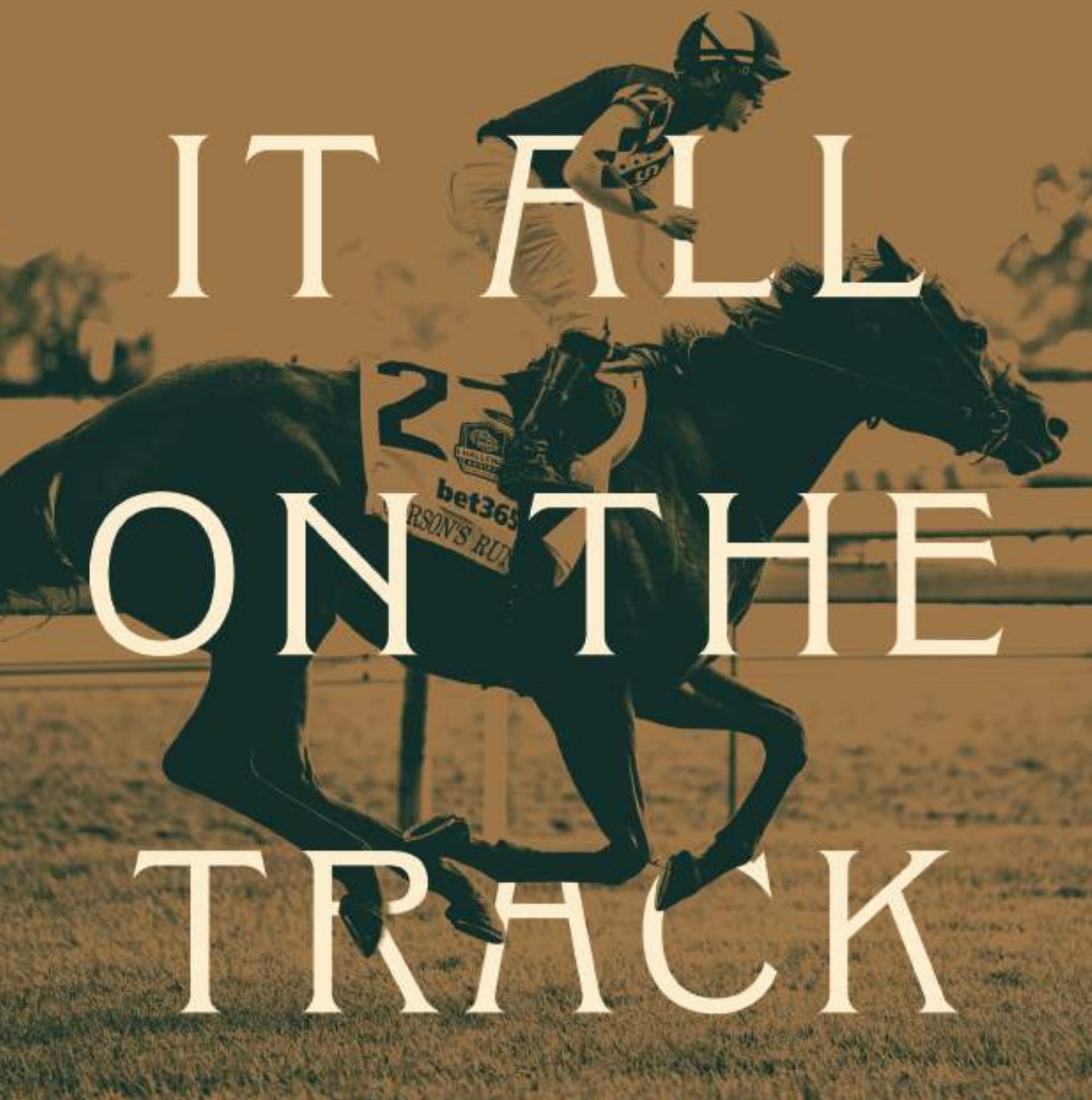


LEAVE

IT ALL

ON THE

TRACK





THE WOODBINE  
EST. CLUB 1956

[WWW.WOODBINE.COM](http://WWW.WOODBINE.COM)

555 Rexdale Blvd, Etobicoke, ON M9W 5L2  
Phone: (416) 675-7223